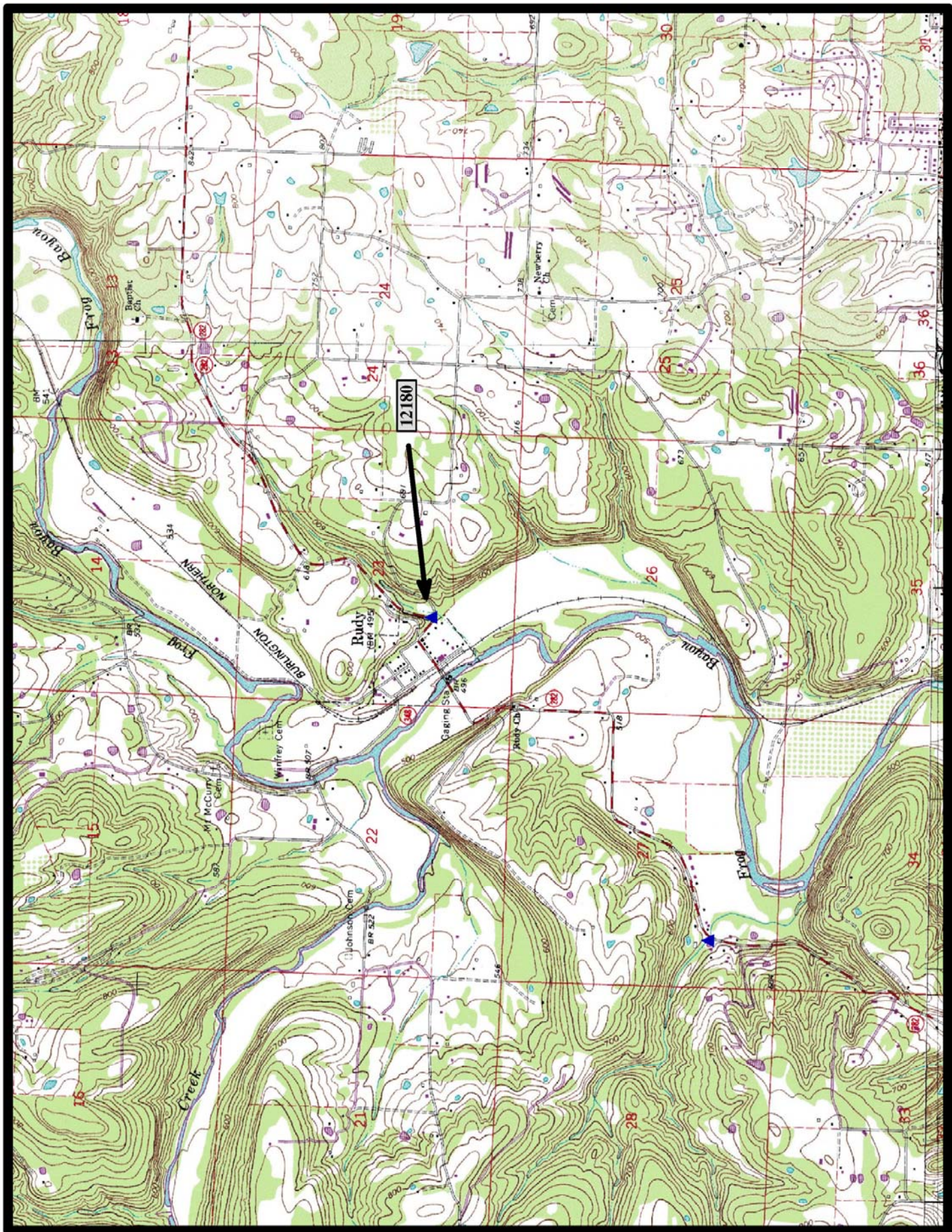




HISTORIC BRIDGE #12180
OLD RUDY WAY (Co. Rd. 19)
CRAWFORD COUNTY
STEEL MULTI-BEAM
CROSSES - UNNAMED CREEK
DATE OF CONSTRUCTION – 1940
BUILDER - WORKS PROGRESS ADMINISTRATION (WPA)
HISTORIC BRIDGE INVENTORY DATE - 2010
SHPO NUMBER -
HAER NUMBER -
DATE LISTED ON NATIONAL REGISTER -
LAT./LONG. 35:31:34.95, -94:16:03.35

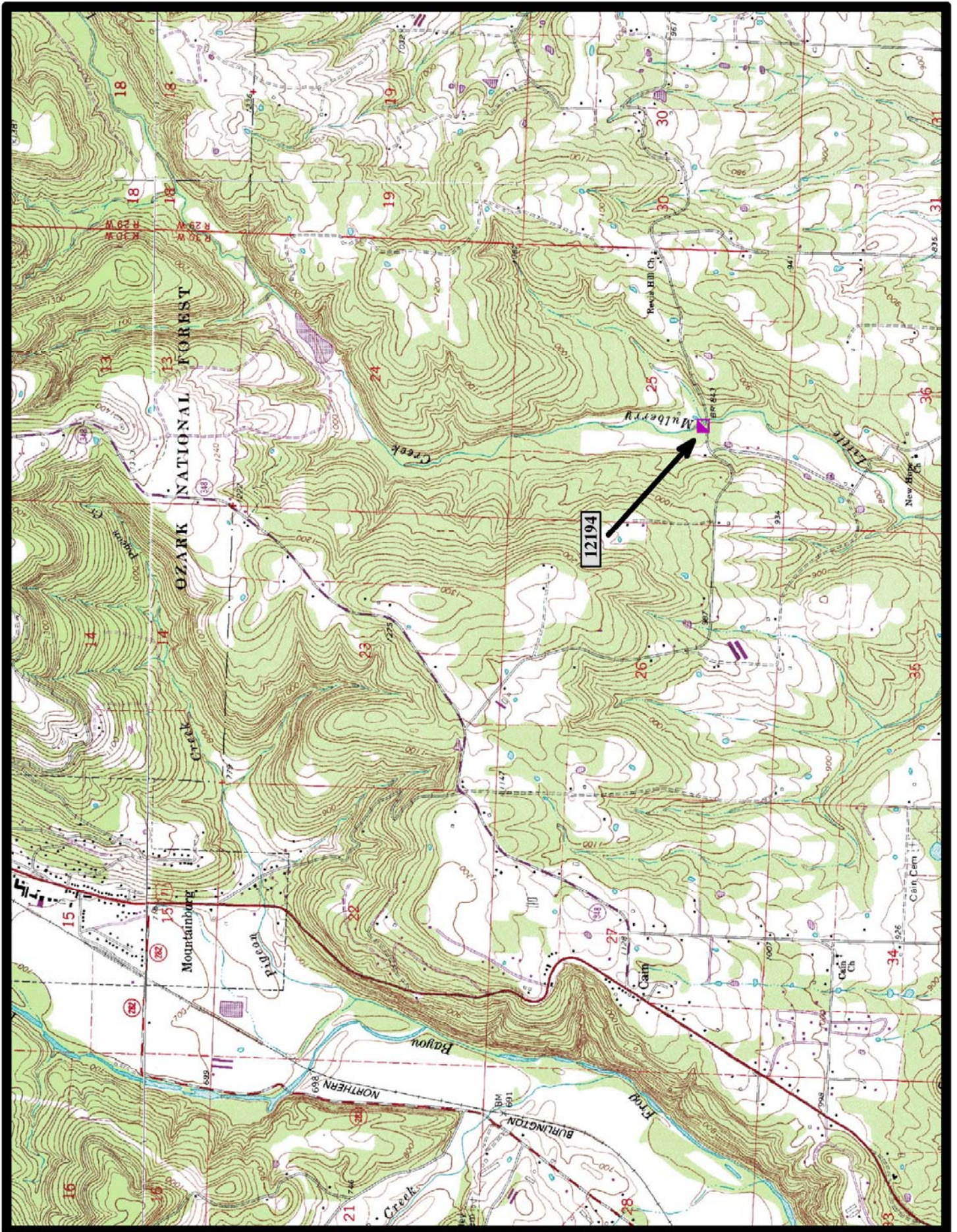


↑
North

Rudy 7.5 min. Quad



HISTORIC BRIDGE #12194
OLD TURNER ROAD (Co. Rd. 40)
CRAWFORD COUNTY
STEEL MULTI-BEAM
CROSSES - LITTLE MULBERRY CREEK
DATE OF CONSTRUCTION - 1941
BUILDER - WORKS PROGRESS ADMINISTRATION (WPA)
HISTORIC BRIDGE INVENTORY DATE - 2010
SHPO NUMBER -
HAER NUMBER -
DATE LISTED ON NATIONAL REGISTER -
LAT./LONG. 35:35:45.14, -94:08:25.62

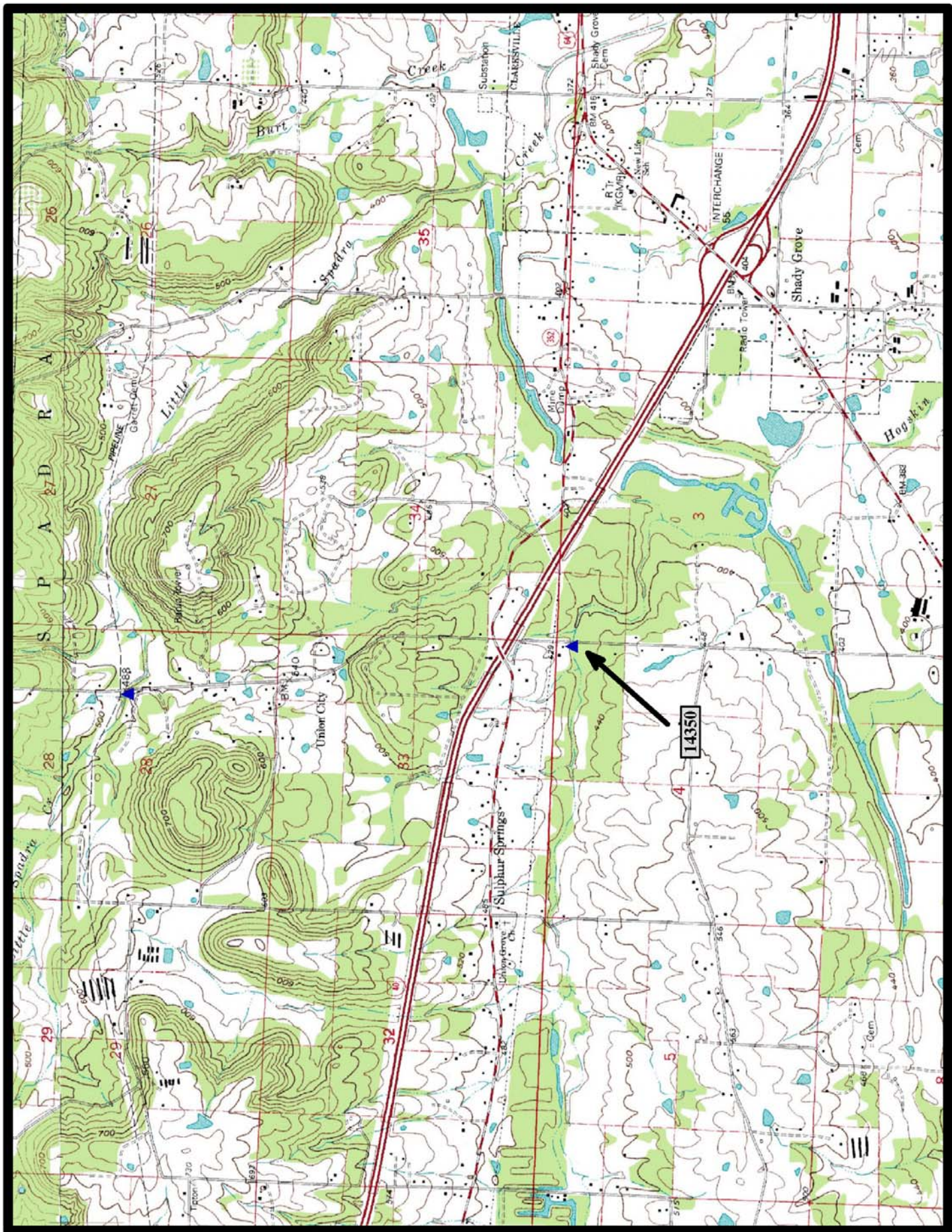


↑
North

Mountainburg SW 7.5 min. Quad



HISTORIC BRIDGE #14350
HAYES CHAPEL ROAD (Co. Rd. 15)
JOHNSON COUNTY
STEEL MULTI-BEAM
CROSSES - HOGSKIN CREEK
DATE OF CONSTRUCTION - 1942
BUILDER - WORKS PROGRESS ADMINISTRATION (WPA)
HISTORIC BRIDGE INVENTORY DATE - 2010
SHPO NUMBER -
HAER NUMBER -
DATE LISTED ON NATIONAL REGISTER -
LAT./LONG. 35:28:23.31, -93:32:45.02



↑
North

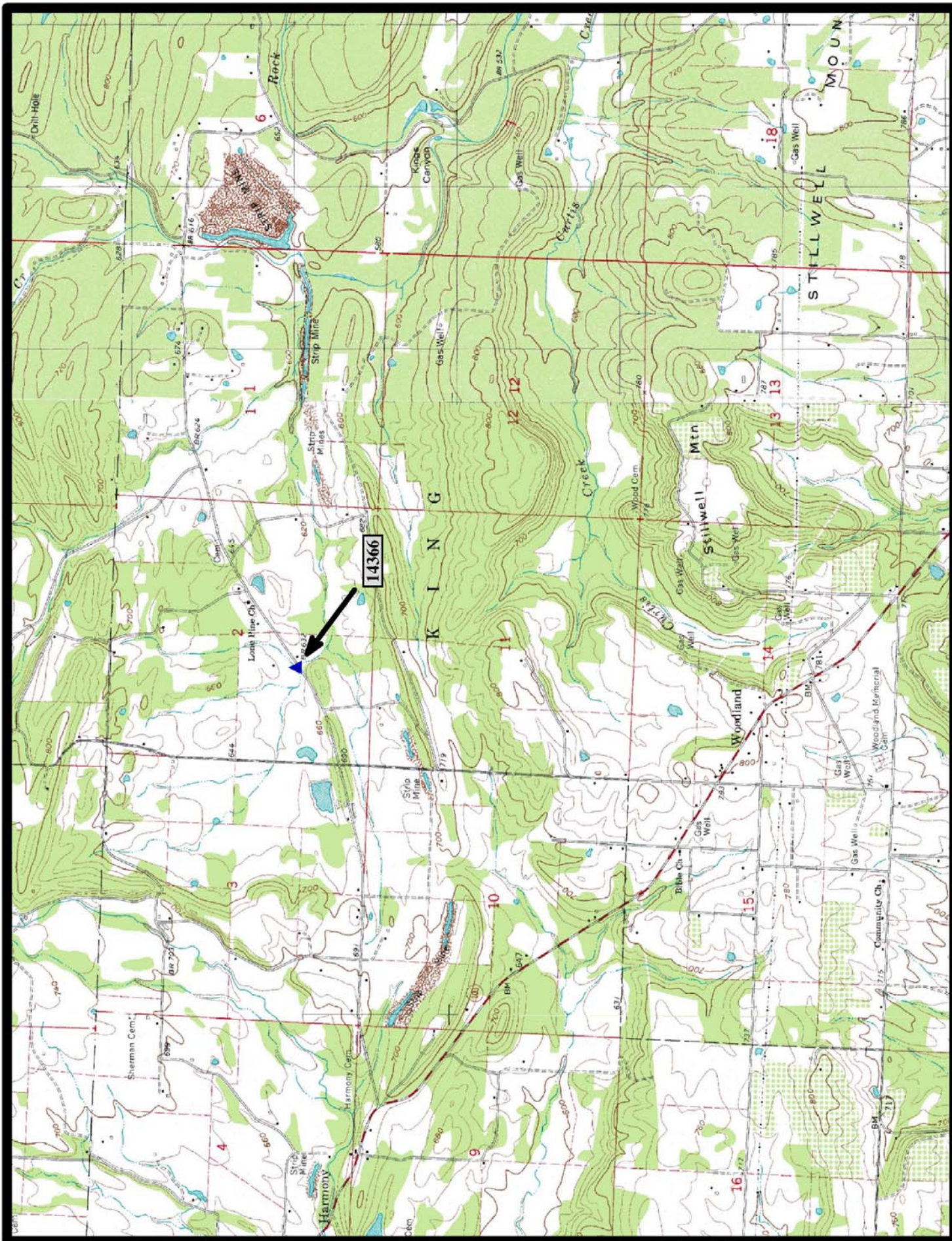
Hartman 7.5 min. Quad



HISTORIC BRIDGE #14357
COUNTY ROAD 23
JOHNSON COUNTY
STEEL MULTI-BEAM
CROSSES - LITTLE SPADRA CREEK
DATE OF CONSTRUCTION - 1942
BUILDER - WORKS PROGRESS ADMINISTRATION (WPA)
HISTORIC BRIDGE INVENTORY DATE - 2010
SHPO NUMBER -
HAER NUMBER -
DATE LISTED ON NATIONAL REGISTER -
LAT./LONG. 35:29:47.62, -93:32:56.74



HISTORIC BRIDGE #14366
LONE PINE ROAD (Co. Rd. 76)
JOHNSON COUNTY
STEEL MULTI-BEAM
CROSSES - SPADRA CREEK
DATE OF CONSTRUCTION - 1941
BUILDER - WORKS PROGRESS ADMINISTRATION (WPA)
HISTORIC BRIDGE INVENTORY DATE - 2010
SHPO NUMBER -
HAER NUMBER -
DATE LISTED ON NATIONAL REGISTER -
LAT./LONG. 35:33:00.95, -93:31:05.13



North

Harmony 7.5 min. Quad